



WELLBEING.

TRAINING AND SUPPORT OFFER AUTUMN 2023

Our Wellbeing team of advisers provide comprehensive support and training for senior leaders, subject leaders, class teachers and support staff across behaviour, pupil wellbeing and race equity and RSHE.

We offer solution-focused and practical consultancy and/or training to meet the needs of all children and young people that enable them to flourish now and in their future. Our support develops leader and staff confidence, passion and expertise.

The core values underpinning the work of our Wellbeing advisers are:

- Improving outcomes and developing great schools.
- Valuing and supporting identity, belonging, agency (self-efficacy).
- Creating processes that support all staff and pupils.
- Working collaboratively with key stakeholders.
- Empowering staff, pupils and parents/carers to work cohesively to enhance pupil wellbeing and behaviour outcomes.

We have courses and training opportunities launched this autumn and can provide bespoke training and support for your setting.

Subscribe to our mailing list



Sign-up to receive regular updates on behaviour, race equity, RSHE and wellbeing.

BEHAVIOUR SOLUTIONS.

Whole school processes where staff and pupils can thrive.

Our experienced and dedicated behaviour advisers work with schools and trusts to support all aspects of enhancing behaviour. We offer creative, practical and effective support and training to facilitate a successful whole school approach.

TRAINING COURSE	DATE/S, VENUE AND COST	BOOKING LINK or FLYER	AUDIENCE
The role of the TA: inside the classroom and beyond – positive playtimes	In-person training Hertfordshire Development Centre (HDC), Stevenage Wednesday 8th November 2023 9:30am - 11:30am Cost: £70 Course code: WEL-P-003	  <i>click or scan</i>	Teaching Assistants
Assessing and evidencing strengths in behaviour and attitudes to learning	In-person training Hertfordshire Development Centre (HDC), Stevenage Wednesday 22nd November 2023 9:30am - 12:30pm Cost: £100.00 Course code: WEL-A-003		Senior leaders Pastoral leaders
Behaviour Leadership Programme (available with three support packages)	In-person training Hertfordshire Development Centre (HDC), Stevenage Thursday 25th January 2024, Thursday 25th April 2024, Thursday 27th June 2024, Thursday 24th October 2024 9:00am - 4:00pm Cost: £488 for two delegates per school		Senior leaders Pastoral leaders

All prices are subject to VAT.



BEHAVIOUR SOLUTIONS.

Whole school processes where staff and pupils can thrive.

We provide a tailored Behaviour Solutions approach to address specific challenges in individual schools and settings:

- Behaviour Enhanced Enquiry (whole school review).
- Post Suspension/Permanent Exclusion Enhanced Enquiry.
- Behaviour for Learning.
- Action to effectively challenge repeated behaviours.
- Emotional Regulation, Peer Mediation, Restorative approaches.
- Effective classroom management.
- Anti-Bullying and Anti-Prejudice Related Incidents.
- Effective and practical Behaviour Policies that work for your school:
 - Review and development
 - Policies into practice.
- Positive relationships through PSHE curriculum.
- Lunchtime and Playtime Behaviours.
- Building Stronger - staff cohesion and consistency.

Contact us to discuss bespoke provision for your setting: wellbeing@hfleducation.org



RACE EQUITY AND ANTIRACISM

Bringing your school together to lead on antiracism

Our race equity advisers have worked with urban and rural schools in all phases to fast-track development focused on becoming an antiracist school. Explore with us how you can improve delivery of race equity, either through bespoke support or by accessing our tried and tested training.

TRAINING COURSE	DATE/S, VENUE AND COST	BOOKING LINK or FLYER	AUDIENCE
Antiracism school audit and consultancy	Webinar training Autumn 2023 launch Cost: £510 Click or scan the QR code to email wellbeing@hfleducation.org for details.	 	Senior leaders
Language Matters	Webinar training Autumn 2023 launch Cost: £57.00 Click or scan the QR code to email wellbeing@hfleducation.org for details.		Teachers Support staff Governors
Educating about Hate Crime	Webinar training 20th September 2023 Cost: £77.50 Course code: WEL-P-001		Senior leaders Pastoral staff
Teaching KS2 History: Early Islamic Civilization	Webinar training Tuesday 10th October 2023 Cost: £57		Curriculum leaders
Supporting staff and pupils with prejudice related incidents	In-person training Hertfordshire Development Centre (HDC), Stevenage 18th October 2023 Cost: £185.00 Course code: WEL-A004		Senior leaders Pastoral staff

All prices are subject to VAT.



TRAINING COURSE	DATE/S, VENUE AND COST	BOOKING LINK or FLYER	AUDIENCE
Antiracism training: How to lead with confidence	In-person training Hertfordshire Development Centre (HDC), Stevenage 2nd October 2023 & 7th February 2024 Cost: £427.00 Course code: WEL-A-001	 <i>click or scan</i>	Senior leaders
Teaching KS2 History: Benin (West African Kingdom)	Webinar Training 6th November 2023 Cost: £57		Curriculum leaders
Recruiting, retaining and supporting a diverse staff	Webinar training 15th November 2023 Cost: £57.00 Course code: WEL-A-002		Senior leaders

RACE EQUITY AND ANTIRACISM

Bringing your school together to lead on antiracism

We provide a wide range of bespoke support for in individual schools and settings including:

- **Whole school race equity review**

Our advisers support schools to reflect and evaluate their practice across all school areas in relation to race and antiracism.

- **Equality policy review service**

A two-part remote process to review EDI.

- **Bespoke staff training**

Our staff training includes: an introduction to antiracism in schools, curriculum development, antiracist behavioural leadership, powerful stakeholder feedback, recruiting, retaining and supporting staff from diverse backgrounds, and antiracism in the RE curriculum.



Click or scan the QR code to contact us and discuss bespoke provision for your setting:
wellbeing@hfleducation.org



WELLBEING QUALITY MARK

The HFL Education Wellbeing Quality Mark (WQM) is a whole school strategic approach to improving wellbeing and mental health. It provides schools and settings with the opportunity to showcase their commitment to wellbeing in all its dimensions.

The WQM offers a rigorous and forensic self-review audit tool to help evidence:

- Where we are now: current good practice.
- Where we are going: looking outwards and upwards.
- Setting 'courageous' actions, areas for development or change.
- Strategic action planning to implement change.

The WQM supports settings to:

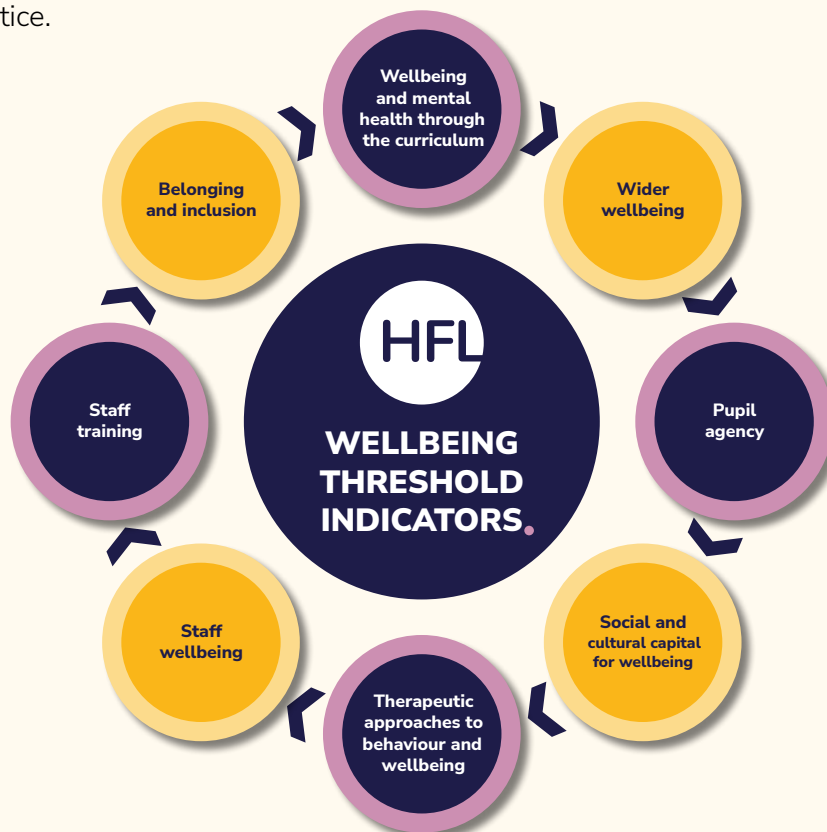
- Identify and develop a key project area to add extra value to the setting's wellbeing offer.
- Support evidence for the Ofsted 'Personal Development' judgement.
- Gain advice and guidance from a dedicated HFL Education Wellbeing adviser.
- Access to the latest research and any additional opportunities offered by HFL Education, partners and share national/ local opportunities.

Cost: £1200 - this programme runs over three terms.

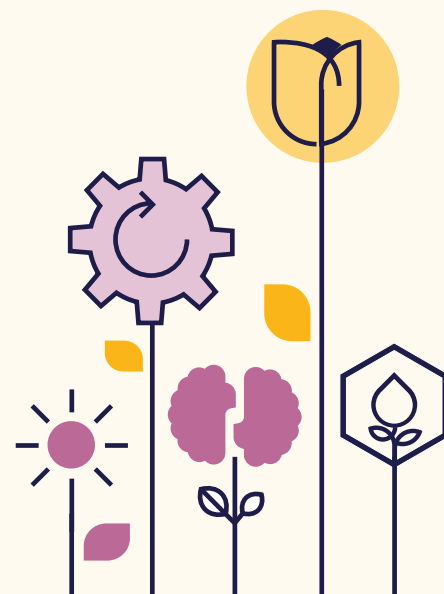
The HFL Education Wellbeing Quality Mark



For further information click or scan the QR code or contact us directly on wellbeing@hfleducation.org



All prices are subject to VAT.



BESPOKE PACKAGES OF SUPPORT

We offer solution-focused and practical consultancy and/or training to meet the needs of all children and young people and enables them to flourish now and in their future. Our support develops leader and staff confidence, passion and expertise.

All
prices are
subject
to VAT.

To discuss or book a bespoke package of support, contact wellbeing@hfleducation.org

Whether you are looking for just a single visit (consultancy or staff meeting), or a longer piece of work over several dates, we would be happy to discuss what you would like to achieve.

EXAMPLES:

1-day* bespoke package

Cost: £750

**Time can be booked as half day visits.*

2-day* bespoke package

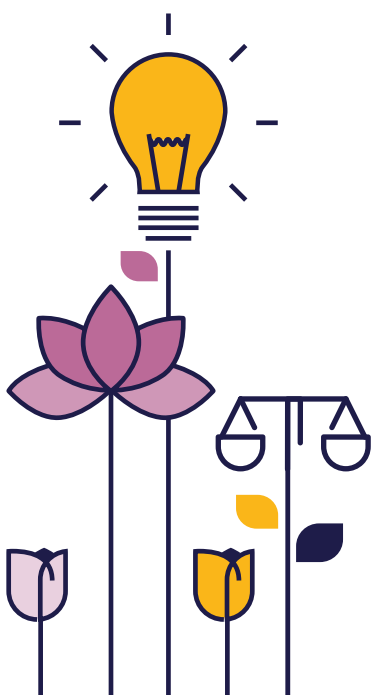
Cost: £1,500

Visits/focuses could include:

- Audits and reviews that provide evidence for developing priorities and improvement plans.
- Policy review and development.
- Curriculum development support.
- Staff CPD/INSET.
- All visits can be followed up with a written report which will identify strengths, areas to consider or for development and clear agreed actions.



Click or scan the
QR to find out more.





Subscribe to our mailing list

Sign-up to receive regular updates on behaviour, race equity, RSHE and wellbeing.



 *click
or scan*

Subscribe to our Wellbeing blogs

