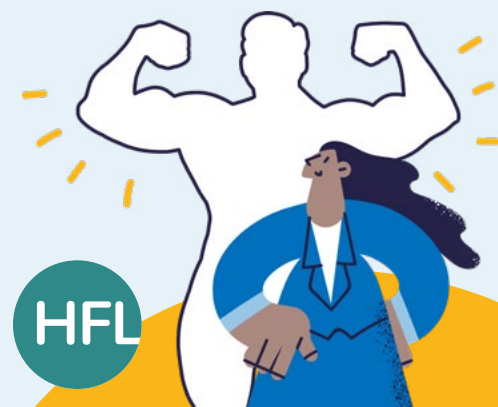


THE 2023 HERTFORDSHIRE PRIMARY HEADTEACHERS' CONFERENCE.

Wednesday 11th to Friday 13th October

Center Parcs Woburn, Bedfordshire



CONFERENCE PROGRAMME

Wednesday 11th October

From 10:00am	Conference registration
10:00am – 4:30pm	Workshop programme and exhibitor marketplace A programme of eight 40-minute workshops will run throughout the day, starting at 10:30am, and there will be an exhibition marketplace where a range of school suppliers and partners will be available to speak to you. Please see overleaf for full details of each workshop and timings so you can plan your day accordingly. <i>Refreshments and lunch will be served in the exhibition space which will be open from 10:00am.</i>
6:00 – 7:00pm	New Headteachers Welcome Reception
7:00pm onwards	Buffet Dinner – for residential guests

Thursday 12th October

8:30 – 9:15am	Conference registration
9:15 – 9:25am	Welcome by Cathy Longhurst, Headteacher, Mandeville Primary School and Carole Bennet, Chief Executive, HFL Education
9:25 – 10:30am	Leading an effective and inclusive interconnected Primary curriculum Emma Turner, Education and Leadership Specialist
10:30 - 11:00am	Break
11:00 – 11:50am	Putting art at the heart, the precious jewel in curriculum thinking Adele Darlington, Art Consultant and EYFS teacher
11:50am – 12:00pm	Discussion time
12:00 – 1:00pm	Living and breathing your history curriculum Dan Hartley, Education Consultant and Leadership Coach/Mentor
1:00 – 2:00pm	Lunch
2:00 – 3:00pm	A primary science curriculum that matters: for children, for teachers, for schools, for society, for our planet – now and in the future Jane Turner, Associate Professor, Director Primary Science Quality Mark
3:00 – 3:10pm	Discussion time
3:10 – 3:55pm	Why music matters most David Chabeaux, Film Actor and Producer and History-making Musician
3:55 – 4:00pm	Conference close Jeremy Loukes, Co-Director of Education Services (Primary and Early Years), HFL Education
6:00 – 7:00pm	Pre-dinner drinks reception
7:00pm – 12:00am	Gala Dinner

Please note that the programme is subject to change.

Friday 13th October

7:00 - 10:00am	Breakfast and check out
----------------	-------------------------

Wellbeing Activity Sessions*

10:00am	Aerial Adventure, Indoor Climbing Adventure, Adventure Golf, 4 Seat Electric Boat
10:05am	Bowling
10:15am	Badminton, Squash
10:30am	Table tennis
11:00am	Aerial Adventure, Indoor Climbing Adventure, Adventure Golf, 4 Seat Electric Boat, Badminton, Table tennis, Squash
11:10am	Bowling
11:30am	Pottery painting
12:00pm onwards	All guests are welcome to use the park facilities and enjoy the surroundings. Please depart the site by 10:00pm.

All guests are also welcome to take some time to walk around the site and use the Center Parcs leisure facilities.

*Wellbeing activity sessions must be booked in advance as spaces are limited and are only eligible with Full Tickets.

Please note that the programme is subject to change.



WORKSHOP SESSIONS: Wednesday 11th October, 10.30am – 4.30pm

WORKSHOP 1	10:30 – 11:10am	12:30 – 1:10pm	2:45 – 3:25pm
-------------------	-----------------	----------------	---------------

Awe, wonder and understanding: developing a science curriculum to enhance curiosity and understanding of the world for all pupils.

With Charlotte Jackson, Primary Science Adviser, HFL Education

A high-quality science education should provide children with excitement, curiosity and the foundations for understanding the world. This session will explore how we can connect science with children's experiences to help strengthen learning and ensure they see science as real and relevant to themselves.

WORKSHOP 2	10:30 – 11:10am	12:30 – 1:10pm	2:45 – 3:25pm
-------------------	-----------------	----------------	---------------

Magic or Mayhem: high quality child-initiated learning.

With Lucky Khera, Andrew Boyes, Rebecca Collins, Early Years Advisers, HFL Education and Hayley Yendell, Headteacher at Roots Federation and former HFL Education Early Years Adviser

This session will support leaders to identify the key elements of what to look for when monitoring high quality practice and provision during child-initiated learning to ensure progress for all children.

WORKSHOP 3	10:30 – 11:10am	12:30 – 1:10pm	2:45 – 3:25pm
-------------------	-----------------	----------------	---------------

Ask HR Anything – Open Discussion on HR & People Management Topics & Employment Law Round-Up.

With Chris Brown, Head of HR & Recruitment Services, HFL Education

This session will be an open Q&A session and an opportunity to discuss any HR topics that delegates wish. It will also include a short employment law round up of the year.

WORKSHOP 4

10:30 – 11:10am

12:30 – 1:10pm

2:45 – 3:25pm

How can regular formative assessment embedded into your curriculum enable deeper and more secure learning?

With Dominic Bedford, School Effectiveness Adviser – Primary and Ben Fuller, Lead Assessment Adviser, HFL Education

This session will support leaders to consider how their teachers provide opportunities to revisit and strengthen learning through retrieval practice, and how teachers use effective questioning approaches to ensure their teaching is responsive and adaptive to pupils' needs.

WORKSHOP 5

11:30am – 12:10pm

1:45 – 2:25pm

3:45 – 4:25pm

The moral imperative: creating a curriculum that develops identity, broadens horizons and enables success for all.

With Kate Kellner-Dilks, Lead Teaching and Learning Adviser (Beyond the core curriculum), HFL Education

The planned curriculum is one of our best tools in helping pupils to be successful in their learning, developing their sense of identity and belonging. The choices we make can have powerful consequences. This session explores what choices we have and how we can use them to enable all pupils to succeed in their learning.

WORKSHOP 6

11:30am – 12:10pm

1:45 – 2:25pm

3:45 – 4:25pm

Adapting the implementation of the curriculum for pupils with SEND.

With Louise Barrell, Lead SEND Adviser and Joanna Di Bella, School Effectiveness Adviser, HFL Education

This session is to support leaders to explore the implementation of the curriculum for pupils with SEND.

WORKSHOP 7

11:30am – 12:10pm

1:45 – 2:25pm

3:45 – 4:25pm

A journey through musical progression from Early Years to Key Stage 2.

With Christina Luchies, Head of Participation and School Music, Ben Stevens, Music Director, Kirsty Allman-Ward, Lead Primary Music Consultant at Hertfordshire Music Service

The journey of musical development is a continuous process, and a well-planned curriculum significantly contributes to this. By understanding the stages, skills, and experiences that make up a child's musical journey, primary head teachers can create an environment that nurtures and supports their pupils' musical growth.

This workshop aims to provide you with valuable insights and practical approaches to support progression within music education in your school. This will be an interactive session helping you to understand what your students should know and be able to do at each stage of their primary education.

WORKSHOP 8

11:30am – 12:10pm

1:45 – 2:25pm

3:45 – 4:25pm

Future-proofing all our pupils: strategies to develop confidence, independence and empowerment.

With Sarah-Jane Ferguson, Wellbeing and Behaviour Adviser, HFL Education

A session exploring the importance of empowering pupils to develop their own agency in our rapidly changing society. Why is it important and how can we do it better? Looking at best practice in schools.

Ticket Options

There are five ticket options for you to choose from including Day Tickets. Please visit the [HFL Education Hub](#) for prices and to buy your ticket.

